

# INVENTORY MANAGEMENT

With TCGplayer Pro, you get to choose exactly how you want to manage your inventory, including the way you make both product and price updates. You can use spreadsheets or fast webforms—or use the TCGplayer Quicklist Card Scanning Software. This guide will walk you through these methods, directing you to the resources you'll need to use each one. (Want more info about Inventory Management? Visit our [Seller website](#) to learn more.)

## In this guide:

- [Spreadsheets](#)
- [Fast Webforms](#)
- [Quicklist Card Scanning Software](#)

## Spreadsheets

Have a long list of products to update? Just upload a spreadsheet of the products you want to change. You can then add and remove products and update prices. Everything you need is in the Pricing tab in your Seller Portal.

1. Export a spreadsheet of your existing inventory.
2. Make the updates you want to that spreadsheet.
3. Import the updated spreadsheet.

That's it! You'll see your changes reflected on both your Online Store and the TCGplayer Marketplace. For more information, refer to [Formatting CSV Files for Import and Export](#).

## Fast Webforms

Update products and prices using the webforms in your Seller Portal.

You have two options:

1. Add products and manage prices individually using the Inventory tab.  
Here you can either manually set the quantity and listing price for each item or match the Lowest Listing, the Last Sold Listing or the Market Price.
2. Use the Mass Pricing Tool in the Pricing tab to update large groups of products.  
Here you can either manually set the quantities and prices or match your prices to the Lowest Listing or the Market Price.

For more information, refer to [Using Our Pricing Tools](#).

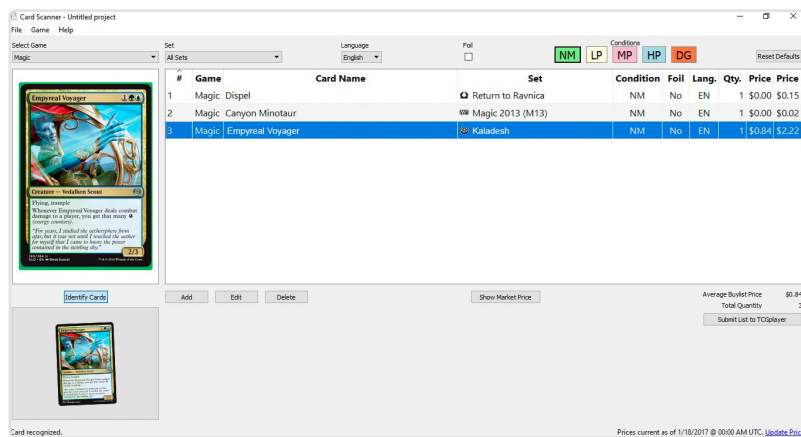
# Quicklist Card Scanning Software

This revolutionary new software allows you to update your inventory simply by scanning cards.

You can perform three main functions using the software:

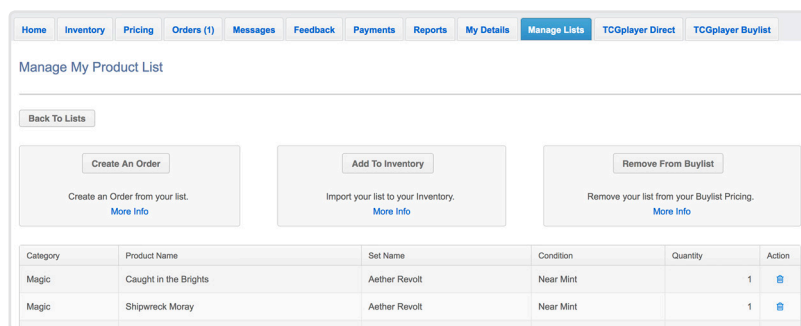
## 1. Add Cards to Your Inventory

Save time by scanning in your cards and adding them to a unified inventory that's synced between your physical store, your TCGplayer Online Store and TCGplayer.com. Now any employee in your store can immediately become an expert on any of the most popular TCGs.



## 2. Check Out Your Customers

Use the software to create an order for a customer. It will remove those items from your inventory and pull up the total cost of all items. You can then accept payment using your store's cash register or POS.



## 3. Buy Cards from Customers

If you're part of the TCGplayer Buylist program through TCGplayer Direct, you can scan the cards you're purchasing from a customer to remove them from your TCGplayer Buylist. That way you don't accidentally buy more cards than you need for your store.

To learn how to set up the software, download the [Quicklist Card Scanning Software Quick Start Guide](#).

For more information about using the software to update your inventory, refer to [Managing Your Lists](#) in our Help Center.